

Respiratory Coaching Projector

ABLE AP



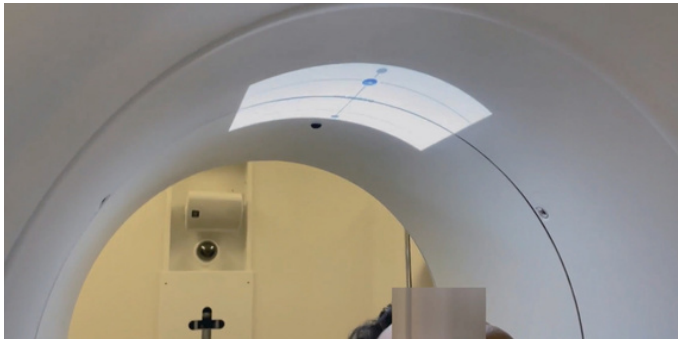
During gating irradiation for lung cancer, liver cancer, and other conditions, improving the reproducibility of respiratory motion through breathing coaching to achieve stable irradiation.

【Features】

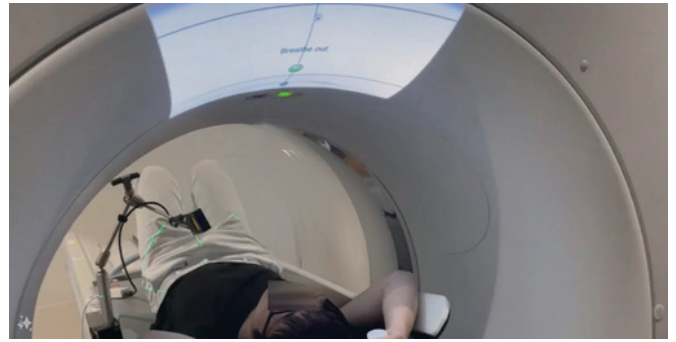
Implementing breathing coaching software in an Android OS-integrated projector. The breathing coaching method utilizes video coaching and audio coaching.

【Target Ring Gantry System】

Linear accelerators (e.g., Tomotherapy/Radixact by Accuray, Halcyon/ETHOS by Varian, OXRAY by Hitachi), 4D CT



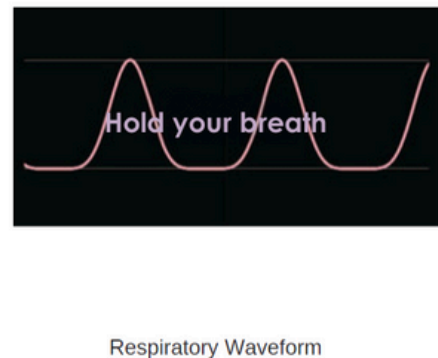
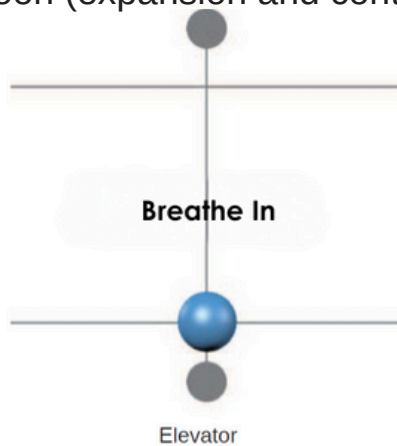
Linear accelerator usage example



4D CT usage examples

【Visual Coaching】

The video can be selected from elevator (vertical movement of a ball), balloon (expansion and contraction of a ball), or breathing waveform.



【Audio Coaching】

The audio and display languages are available in 9 languages.

(Japanese, English, Chinese, French, German, Italian, Spanish, Portuguese, Russian)

【References】

Masao Tanooka • Keisuke Sano • Wataru Okada

An In-Bore Audio-Visual Respiratory Coaching Projector for Ring Gantry Systems

<https://www.cureus.com/articles/301997#/>



References

※Due to product improvements, specifications, design, and other features may be changed without prior notice.



Anzai Medical Co., Ltd.

〒141-0033 3-6-25 Nishi-Shinagawa, Shinagawa-Ku Tokyo, Japan

TEL: 03-3779-1611 info@anzai-med.co.jp / www.anzai-med.co.jp



Website